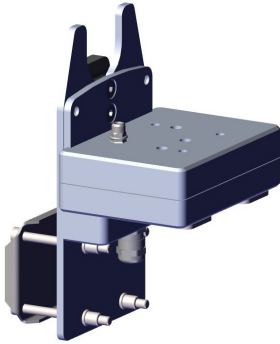


Quick Connect for RWS200



Features

- Efficient and safe way to perform periodic maintenance tasks by the roadside at the ground level
- Available for DST111, DSC211, PWD12/PWD22, and Mobotix M16 camera
- Retrofit possible for existing sensors and cameras on RWS200 stations

Quick Connects are adapters for selected sensors and cameras of Vaisala Road Weather Station RWS200. They enable effective and safe periodic maintenance at the ground level, enhancing the safety of maintenance personnel and reducing maintenance costs. Quick Connects can be used with sensors and cameras installed up to 7.5 meters (24 feet) from the ground.

Reduced maintenance costs

Quick Connects lower the overall sensor maintenance costs by allowing certain periodic maintenance tasks to be performed on the ground, removing the need for an aerial work platform and minimizing the need for road closures and traffic management.

Quick Connects also enhance the safety of field engineers by the roadside. With Quick Connects, the following maintenance tasks can be performed by one person on the ground:

- Periodic cleaning of optical sensors (DSC211, DST111, and PWD12/PWD22) and fixed camera (Mobotix M16)
- Calibrating PWD12/PWD22

Self-aligning mechanics

An aerial work platform is still needed for installing the sensors with Quick Connects and for aligning the sensors and the camera angles on the mast. Correct alignment is crucial for sensor performance.

After completing the adjustments, there is no need align the sensors or the camera again after maintenance tasks. Quick Connects automatically align the sensor to the initial position, enabling fast disconnection and reconnection.

Robust design for roadside

Quick Connects are made of aluminum and stainless steel for durability. These materials and the connector design help the Quick Connects withstand harsh conditions by the roadside where de-icing chemicals are present. Vaisala has evaluated the mechanics to comply with practical environmental needs by the roadside.

Quick Connect retrofit for RWS200

Quick Connects can be retrofitted to existing RWS200 stations. The regular mounting brackets and cables can be replaced, for example, during scheduled maintenance visits. Quick Connects include pre-assembled 9-meter (29-foot 6-inch) sensor cables.

Technical data

Mechanical specifications

Dimensions (H × W × L) ¹⁾	205 × 153 × 149 mm (8.07 × 6.02 × 5.88 in)
Material	Aluminum, stainless steel AISI 316 and AISI 304
Lifting weight (sensor and Quick Connect)	
QUICKPWD	3.9 kg (8.60 lb)
QUICKDSCDST	DSC211: 4.0 kg (8.82 lb) DST111: 2.6 kg (5.73 lb)
QUICKCAM	2.0 kg (4.41 lb)

¹⁾ Quick Connect sensor adapter without cable.

Accessory specifications

Telescopic rod length	199–760 cm (78–299 in)
Telescopic rod weight	3 kg (6.61 lb)
Rope length	Blue rope: 20 m (65 ft 7 in) Red rope: 1 m (3 ft 3 in)
Rope diameter	Blue rope: 6 mm (0.24 in) Red rope: 5 mm (0.20 in)
Materials	
Telescopic rod	2 lowest sections: Carbon fiber and fiberglass Other sections: Carbon fiber
Locking key	Plastic (nylon)
Ropes	Polypropylene (PP)
Rope bag	PVC-free TPU, polypropylene (PP), polyester, stainless steel
Safety hook	Steel S355
Magnet adapter	Plastic (nylon), neodymium, steel, boron, rubber
Rope grab	Plastic (nylon), stainless steel AISI 316
Carabiners	Stainless steel AISI 316